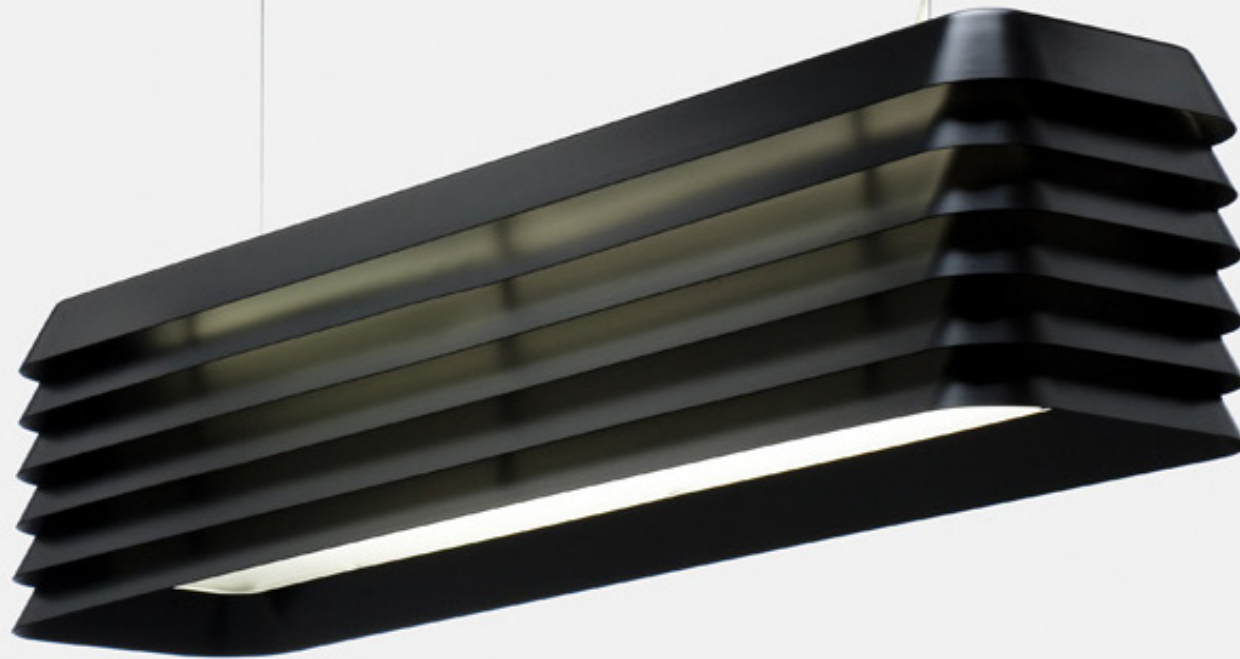
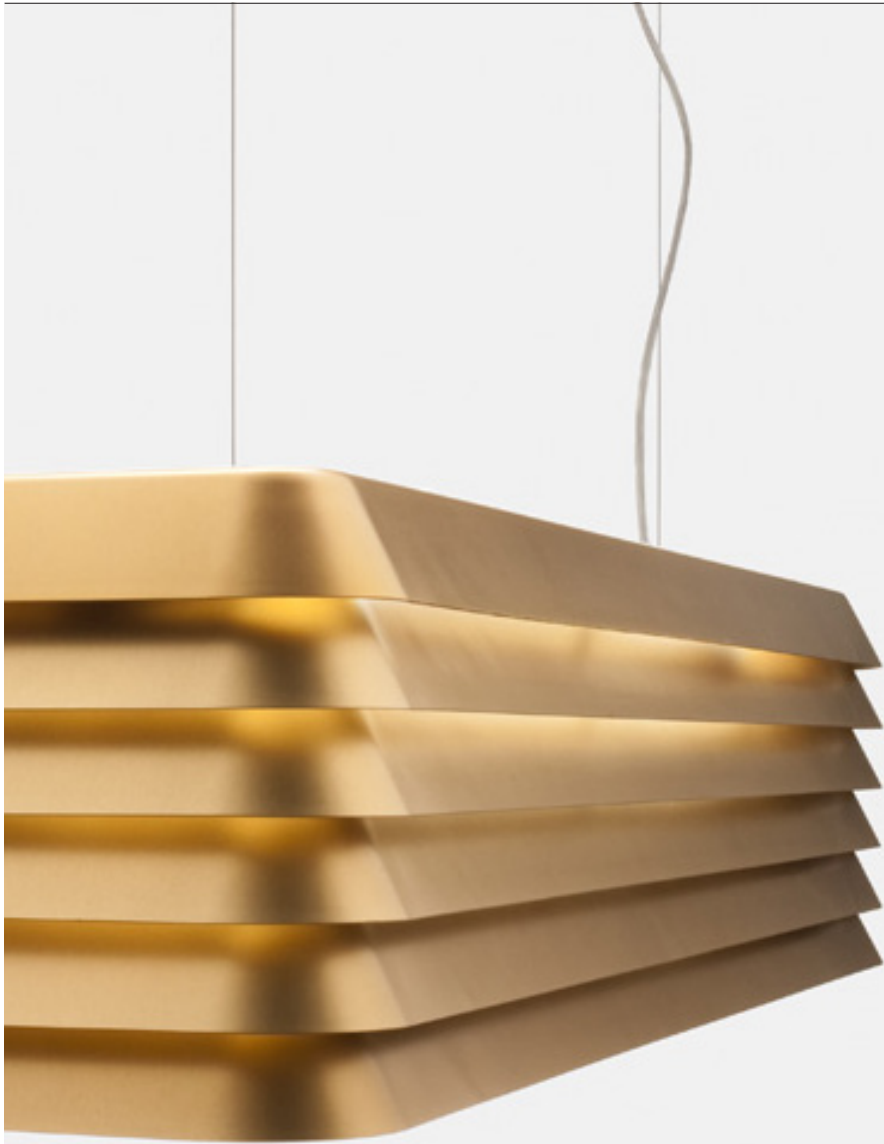


LOUVRE LIGHT

Klauser & Carpenter





Louvre Light **Klauser & Carpenter**

Leading Light

Be sure of a flattering light
and a sociable evening

Referencing window blinds, Scandinavian lighting and the rear windows of 1980s 'muscle' cars the Louvre is a surprisingly elegant and understated light. Seamless, pressed-aluminium louvres with compound-curved corners are repeated layer upon layer. This creates a multifaceted shade that provides glare-free, directional and ambient light.

It's a practical light source as well as a fascinating and formally enticing object in its own right. The long proportions and scale of Louvre make it ideal for hanging above a dining table. 'Our aim was to illuminate the space as well as the light itself.' Klauser & Carpenter



Louvre Light Klauser & Carpenter

Design: 2008

Description: Suspension light

Light Emission: Direct and in-direct

Light Fitting:

S1: 2× T5 linear fluorescent 39W
(electronic ballast), 220/240V,
PVC clear cable

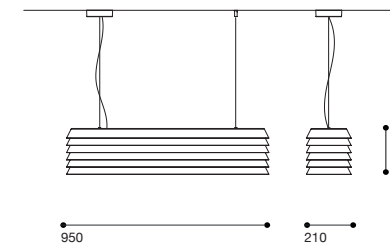
Dimensions:

S1: Shade L950mm × D210mm ×
H215mm, cable L2000mm, 6.8kg

Materials: Anodised aluminium,
polycarbonate diffuser, powder-coated
aluminium and steel fixings, steel
suspension cable

Compliant: CE marking

Colours: Anodised black, anodised
natural, anodised bronze



Klauser & Carpenter
German/ British Designers
Born 1972/1975



André Klauser trained in Design at the Fachhochschule Münster while Ed Carpenter trained in sculpture at Kingston University. They met in 2000 whilst studying on the MA Design Products course at the Royal College of Art . Having set up their individual practices immediately after graduating, and building a portfolio of work respectively they formed Klauser & Carpenter on the back of some successful collaborations. Working on a wide range of design led projects they have built an impressive list of clients in the UK and internationally. Furthermore they are partners in the design and production company Very Good & Proper.